

**SALEM TOWNSHIP**  
**CHUBB ROAD PAVING PROJECT**  
**SPECIAL ASSESSMENT DISTRICT**

RESOLUTION APPROVING AND CONFIRMING SPECIAL ASSESSMENT  
DISTRICT, PROJECT PLANS AND REVISED COSTS, SPECIAL  
ASSESSMENT DISTRICT TERM, AND DIRECTING SUPERVISOR  
TO PREPARE SPECIAL ASSESSMENT ROLL

On September 20, 2018, the Salem Township Board of Trustees approved a Resolution declaring its intent to proceed with establishing a special assessment district to finance the paving and improvement of Chubb Road between Five Mile Road and Six Mile Road (the Project). The Project was defined as:

Construction of an asphalt surface and related improvements on Chubb Road between Five Mile Road and Six Mile Road to be designed and constructed for heavy vehicle loads year-round and designated to be an All-Season Road by the Washtenaw County Road Commission.

The purpose of The Project is to provide road improvement with a special benefit to industrial, commercial, residential and all property owners adjacent to Chubb Road between Five Mile and Six Mile Roads.

**NOW THEREFORE, BE IT RESOLVED AS FOLLOWS:**

1. The Township will proceed with the Project as described above and hereby establishes the special assessment district to finance the cost of the project. The special assessment district (the District) is defined as all properties adjacent to Chubb Road between Five Mile and Six Mile Roads as set forth in the special assessment district map attached as Exhibit A.

2. Washtenaw County Engineers have prepared plans showing the Project which plans are on file in the office of the Clerk of Salem Township. The estimated cost of the Project, as amended, is Two Million, Four Hundred Seventy-Eight Thousand, Three Hundred Ninety-Five Dollars (\$2,478,395.00). A periodic redetermination of the cost may be necessary without changing the District properties or boundaries. The date at which such redetermination may be made is October 8, 2019.

3. The Salem Township Board of Trustees has previously approved a contribution of \$1,300,000 by Salem Township to the projects for the paving of Chubb Road and Five Mile Roads which the Township Board of Trustees hereby allocates that contribution as follows:       percent (   %) to the Chubb Road project and       percent (   %) to the Five Mile paving project.

4. Advanced Disposal, on behalf of the Arbor Hills Landfill, has generously agreed to a contribution of \$1,000,000.00 to the projects for the paving of Chubb Road and Five Mile Road which the Township Board of Trustees hereby allocates that contribution as follows:       percent (   %) to the Chubb Road project and       percent (   %) to the Five Mile paving project.

3. The term of the special assessment district (the District) shall be Fifteen (15) Years.

4. The Township Board hereby directs the Township Supervisor to prepare a special assessment roll which shall describe the parcels to be assessed, the names of the owners of record of each parcel, and the total amount to be assessed against each parcel, after deducting the contributions to the Project by Salem Township and Advanced Disposal.

5. The Township Board will conduct a subsequent public hearing for the purpose of hearing statements and objections to the assessment roll for the District. Notice of such public hearing shall be as provided by law in MCL 41.724, 41.724a and 41.725.

Roll Call:

Converse:

DeLuca:

McLaughlin:

Wensley:

Trent:

Daniel:

Whittaker:

ABSTENTIONS:

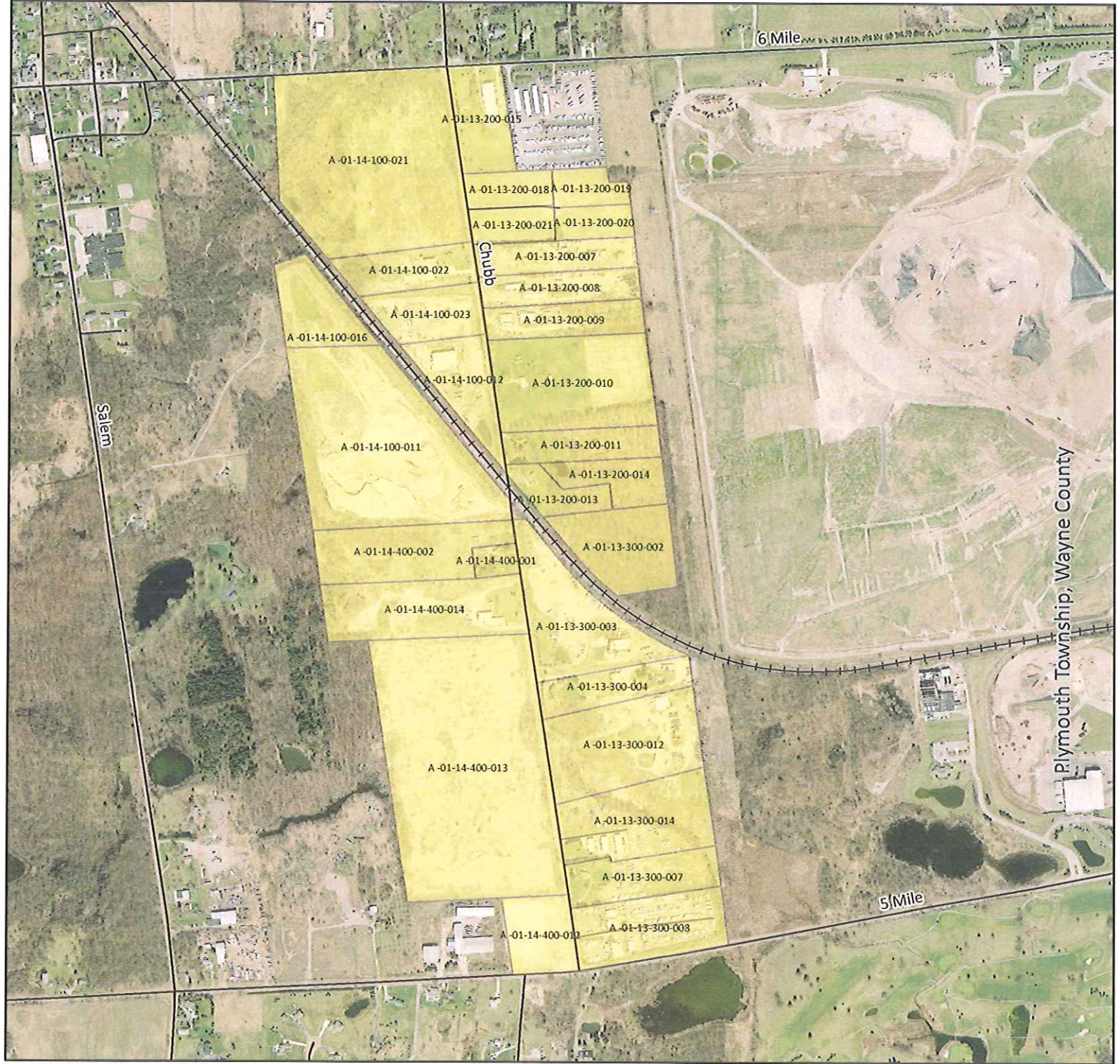
ABSENT:

**CERTIFICATION**

It is hereby certified that the foregoing Resolution is a true and accurate copy of the Resolution adopted by the Salem Township Board at a meeting of the Salem Board of Trustees duly called and held on the 12th day of February, 2019.

SALEM TOWNSHIP

BY: \_\_\_\_\_  
Del Wensley, Township, Clerk



**Parcel ID Number**

- |                  |                  |
|------------------|------------------|
| A -01-13-200-007 | A -01-13-300-007 |
| A -01-13-200-008 | A -01-13-300-008 |
| A -01-13-200-009 | A -01-13-300-012 |
| A -01-13-200-010 | A -01-13-300-014 |
| A -01-13-200-011 | A -01-14-100-011 |
| A -01-13-200-013 | A -01-14-100-012 |
| A -01-13-200-014 | A -01-14-100-016 |
| A -01-13-200-015 | A -01-14-100-021 |
| A -01-13-200-018 | A -01-14-100-022 |
| A -01-13-200-019 | A -01-14-100-023 |
| A -01-13-200-020 | A -01-14-400-001 |
| A -01-13-200-021 | A -01-14-400-002 |
| A -01-13-300-002 | A -01-14-400-012 |
| A -01-13-300-003 | A -01-14-400-013 |
| A -01-13-300-004 | A -01-14-400-014 |

**CHUBB ROAD PAVING PROJECT  
SPECIAL ASSESSMENT DISTRICT MAP**  
Salem Township, Washtenaw County

